

Model No. DX-100

TYPE: Self-supporting, extendable, crank-up tower.

SPECIFICATIONS:

TOWER HEIGHT: Extended 100'. Retracted 32'.

TOWER SUPPORT: Self-supporting no guys.

WIND LOADING: Engineering analysis indicates the tower will support an antenna with an equivalent effective projected area of 24-ft² at a basic wind speed of 100 MPH, 3-second gust per ANSI/TIA-222-H.

DEAD LOAD: The maximum antenna dead load is 400 lbs.

WEIGHT: The tower with the base weighs 2500 pounds.

SECTIONS: The tower is made from 6 each 20 foot sections #4, #5, #6, #7, #8 and #9.

DESCRIPTION:

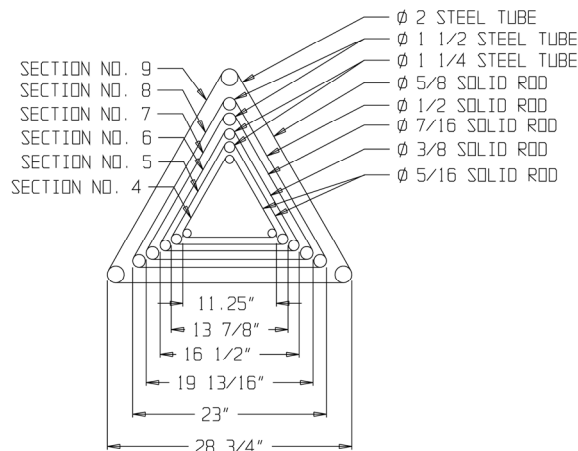
Tower is complete with a gearbox, drum, hoisting cables, and a rigid concrete base mount. The tower comes equipped with a rotator plate, manual and one set of drawings and calculations. Hoisting cable system designed to extend the tower telescopic sections uniformly.

The DX-100 is a motorized tower, with a 1 1/2 HP electric motor and comes with an electric control box and two limit switches wired for 220 volts This tower has a positive pull down. "Positive Control" worm gear winch permits the raising and lowering of DX towers without the aid of locks. DX-100 uses a 50:1 ratio winch. The DX-100 also includes a pre-wired motor control assembly.

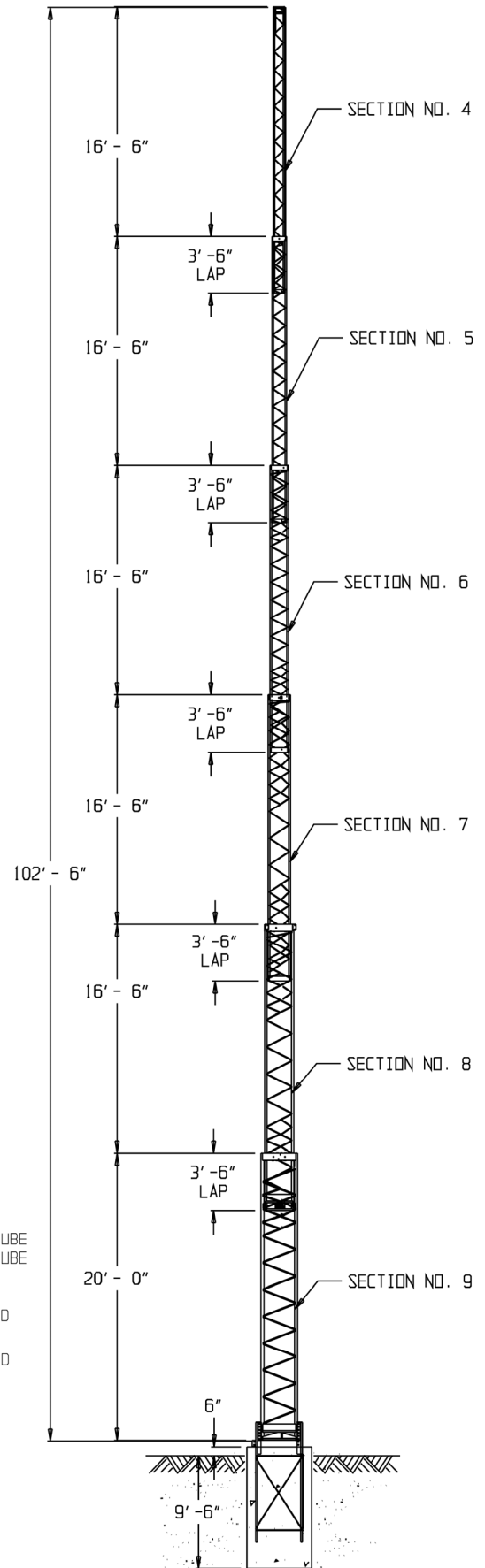
This tower has a pulley frame on 3 faces and uses 5/16 x 7 x 19 aircraft cable.

ACCESSORIES:

- RCB-86 LT (#9 Wide Section)
- TB-2 Thrust Bearing
- CO-6 for DX-100
- Masts
- TA-86
- Replacement Pulleys
- #4 Rotator Plates
- DX-100 manual, Drawings & Calculations
- Cable Kit for DX-100
- RLT



TOWER CROSS SECTION



PART# 482-4000 \$32,617.00 USD