

Model No. DX-70HD

TYPE: Self-supporting, extendable, motorized heavy duty crank-up tower.

SPECIFICATIONS:

TOWER HEIGHT: Extended 70'. Retracted 25'.

TOWER SUPPORT: Self-supporting no guys.

WIND LOADING: Engineering analysis indicates the tower will support an antenna with an equivalent effective projected area of 80-ft² at a basic wind speed of 100 MPH, 3-second gust per ANSI/TIA-222-H. Exposure C, No Crest, Topo

This tower is suggested for high wind areas where heavy loading is required.

DEAD LOAD: The maximum antenna dead load is 500 lbs.

WEIGHT: The tower with the base weighs 2,700 pounds.

SECTIONS: The tower is made from 4 each 20 foot sections #7, #8, #9 and #10.

DESCRIPTION:

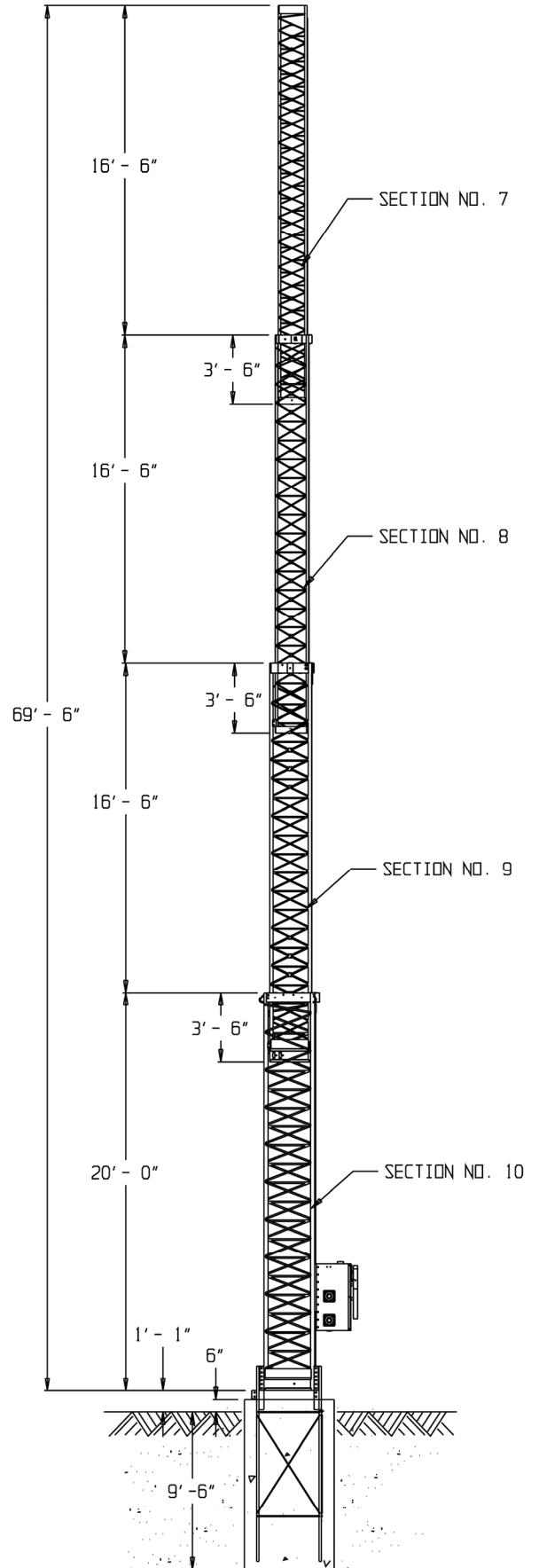
Tower is complete with a 100:1 gearbox, 1.5 hp electric motor, drum, dual 5/16 x 7 x 19 aircraft lift cables, positive pull down and a rigid concrete base mount, RCB #10. The tower is designed to extend the tower telescopic sections uniformly. With your purchase, a user's manual is included.

The DX-70HD has pulley frames on all three sides.

The DX-70HD is built with high strength tubing and the bracing is made of solid rod. This design is a strong engineering configuration, yet save weight, resists torsion, and reduces wind load, allowing for more antenna load to be installed on the tower.

ACCESSORIES:

- DX-70HD manual,
- Drawings & Calculations
- RCB #10
- TB-2 Thrust Bearing
- CO-4 for DX-70HD
- Masts
- TA #10
- Replacement Pulleys
- #7 Rotator Plates
- Cable Kit for DX-70HD
- RLT



PART# 483-4000 \$25,693.00 USD