

# Model No. DX-86

**TYPE:** Self-supporting, extendable, crank-up tower.

**SPECIFICATIONS:**

TOWER HEIGHT: Extended 86'. Retracted 22'.

TOWER SUPPORT: Self-supporting no guys.

WIND LOADING: Engineering analysis indicates the tower will support an antenna with an equivalent effective projected area of 26-ft<sup>2</sup> at a basic wind speed of 100 MPH, 3-second gust per ANSI/TIA-222-H.

DEAD LOAD: The maximum antenna dead load is 400 lbs.

WEIGHT: The tower with the base weighs 2100 pounds.

SECTIONS: The tower is made from 5 each 20 foot sections #5, #6, #7, #8 and #9.

**DESCRIPTION:**

Tower is complete with a gearbox, drum, hoisting cables, and a rigid concrete base mount. The tower comes equipped with a rotator plate, manual and one set of drawings and calculations. Hoisting cable system designed to extend the tower telescopic sections uniformly.

The DX-86 is a motorized with an 1 HP electric motor, electric control box and two limit switches wired for 220 V. This tower has a positive pull down. "Positive Control" worm gear winch permits the raising and lowering of DX towers without the aid of stops or locks. DX-86 uses a 50:1 ratio winch. The DX-86 also includes a pre-wired motor control assembly.

This tower has a pulley frame on 3 faces and uses 5/16 x 7 x 19 aircraft cable.

**ACCESSORIES:**

RCB-86 LT (#9 Wide Section)

TB-2 Thrust Bearing

CO-6 for DX-86

Masts

TA-86

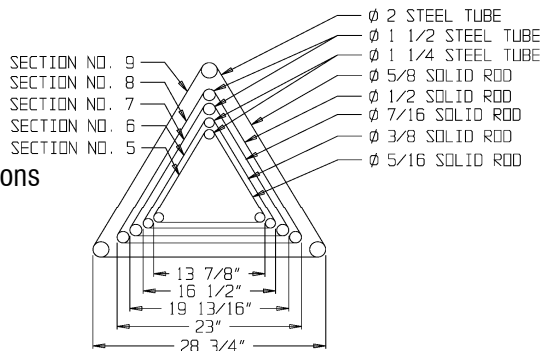
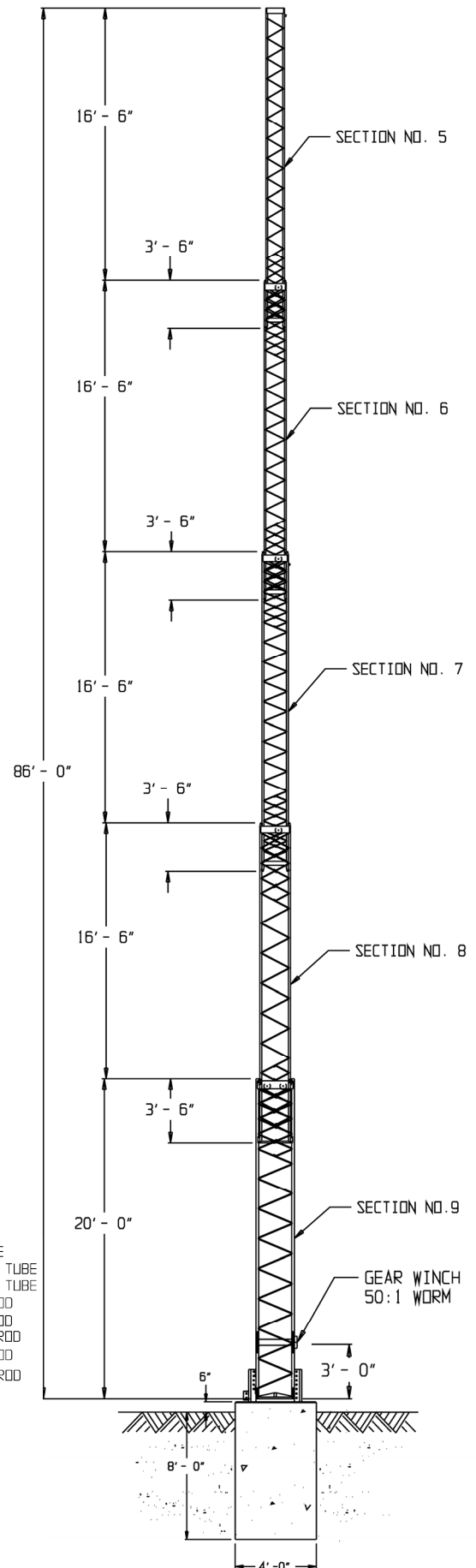
Replacement Pulleys

#5 Rotator Plates

DX-86 manual, Drawings, Calculations

Cable Kit for DX-86

RLT



TOWER CROSS SECTION

**PART# 481-4000 \$18,827.00 USD**