

Model No. LM-470

TYPE: Self-supporting, extendable, crank-up tower.

SPECIFICATIONS:

TOWER HEIGHT: Extended 69'-6". Retracted 25'-6".

TOWER SUPPORT: Self-supporting, no guys.

WIND LOADING: Engineering analysis indicates the tower will support an antenna with an equivalent effective projected area of 24-ft² at a basic wind speed of 100 MPH, 3-second gust per ANSI/TIA-222-H.

DEAD LOAD: The maximum antenna dead load is 450 lbs.

WEIGHT: The tower with the base weighs 1,200 pounds.

SECTIONS: The tower is made from 4 each 20 foot sections #5, #6, #7 and #8.

DESCRIPTION:

Tower is complete with a gearbox, drum, hoisting cables, and a rigid concrete base mount. The tower comes equipped with a rotator plate, manual and one set of drawings and calculations. Hoisting cable system designed to extend the tower telescopic sections uniformly.

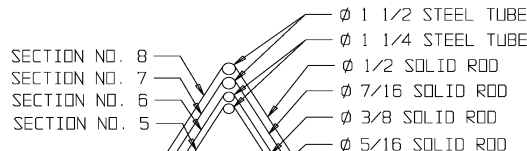
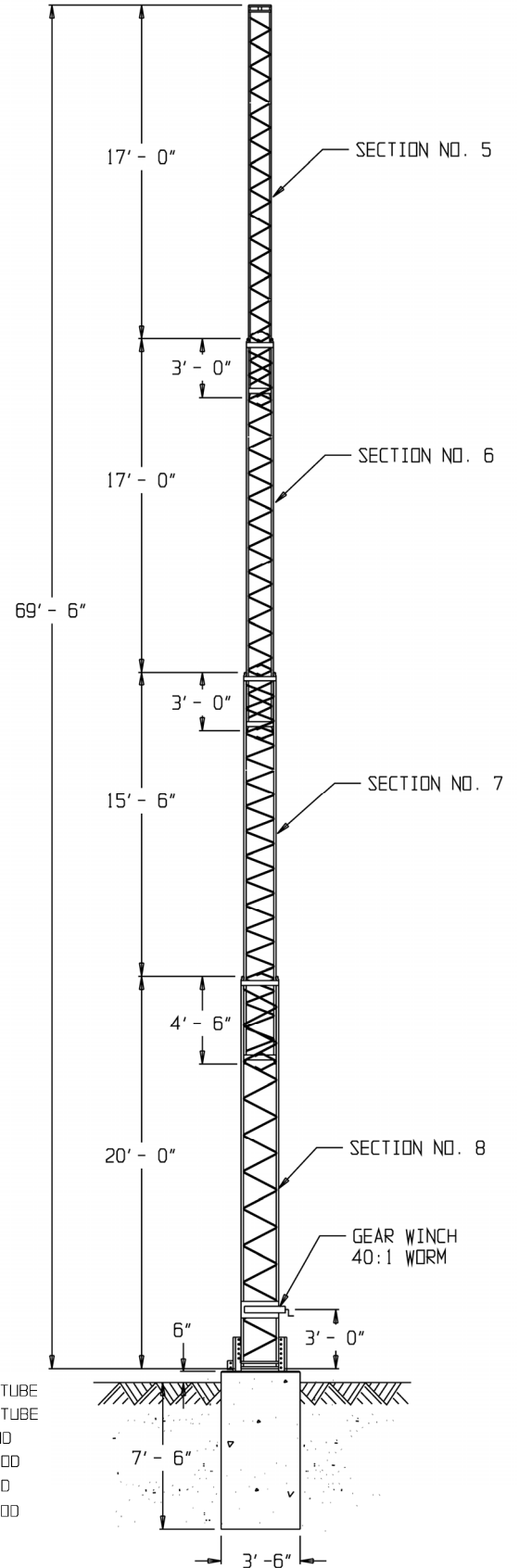
The LM-470 is motorized, and includes 1/2 HP electric motor, electric control box and two limit switches wired for 110. This tower has a positive pull down.

"Positive Control" worm gear winch permits the raising and lowering of LM towers without the aid of stops or locks. LM-470 uses a 40:1 ratio winch. The LM-470 also includes a pre-wired motor control assembly.

This tower has a pulley frame on two faces and uses 1/4 x 7 x 19 aircraft cable.

ACCESSORIES

- RCB-70LT (#8 Wide Section)
- LM-470 Manual, Drawings, Calculations
- CO-4 for LM-470
- Replacement Pulleys
- TA-70
- Masts
- #5 Rotor Plates
- TB-2 Thrust Bearing
- Cable Kit for LM-470
- RLT



TOWER CROSS SECTION

PART# 470-4000 \$11,674.00 USD