

Model No. TM-5100R HD

TYPE: Self-supporting, extendable, motorized tubular mast.
Designed for light weight antenna load.

SPECIFICATIONS:

TUBULAR MAST HEIGHT: Extended 100'-1". Retracted 29'-0".

WIND LOADING: Engineering analysis indicates the tower will support an antenna with an equivalent effective projected area of 32-ft² at a basic wind speed of 100 MPH, 3-second gust per ANSI/TIA-222-H., Exposure C, No Crest, Topo 1.

DEAD LOAD: The maximum antenna dead load is 650 lbs.

WEIGHT: The mast with the base weighs 4,350 pounds.

SECTIONS: The mast is made from 12", 10", 8", 6" and 4" pipe, Fy= 50 ksi

DESCRIPTION:

Tubular mast is complete with a 50:1 gearbox, 1 1/2 hp, 220V electric motor, 1/4" x 7 x 19 aircraft lift cable lift system and a hinged concrete base mount. The mast is designed to extend the tubular telescopic sections uniformly. A user's manual is included.

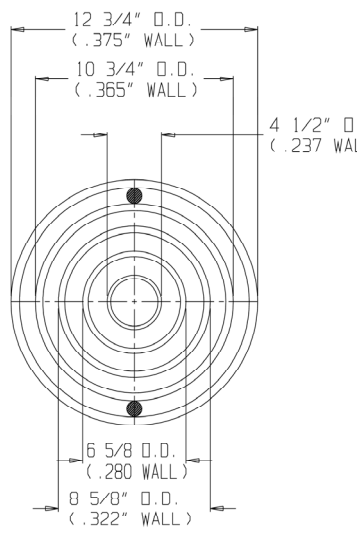
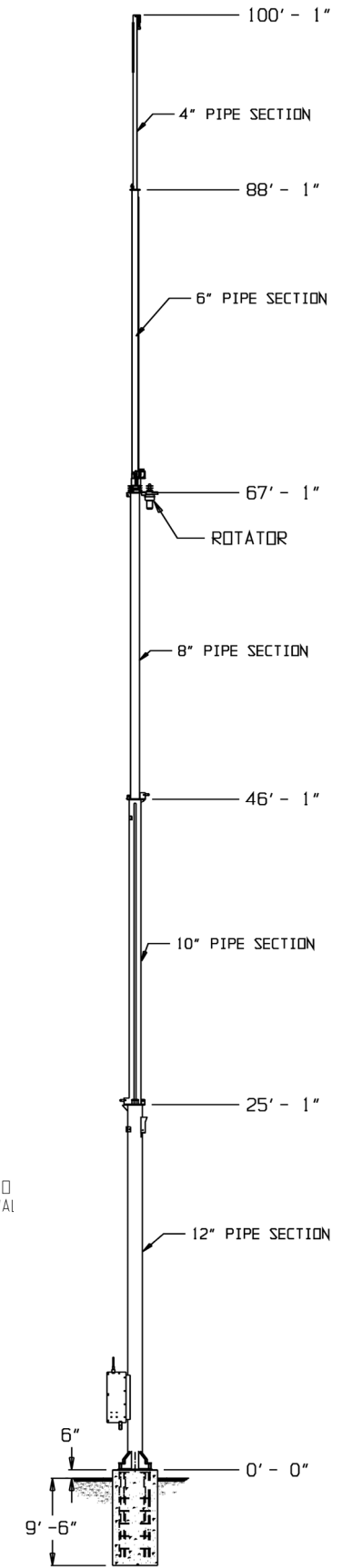
Tubular mast include a hinged base mount that is installed in concrete. This base mount allows the tower to be hinged at ground level and tilted into a vertical position.

The TM towers are hot-dipped galvanized after fabrication for maintenance free finish.

The top (2) sections of the mast rotate and a standard mast adapter fits into the top section to accommodate a two (2) inch O.D. mast size.

ACCESSORIES:

- TM-490HD manual, Drawings, Calculations
- TM-490HD Concrete Base
- CO-4 for TM Work Platform
- Tilting Gin Pole
- Rotator Cage Assembly
- Cable Kit
- Motor Control Assembly
- TB-2 Thrust Bearing



CROSS SECTION

PART# 528-4000 \$30,614.00 USD