

Model No. DX-70

TYPE: Self-supporting, extendable, crank-up tower.

SPECIFICATIONS:

TOWER HEIGHT: Extended 70'. Retracted 24'-6".

TOWER SUPPORT: Self-supporting no guys.

WIND LOADING: Engineering analysis indicates the tower will support an antenna with an equivalent effective projected area of 45-ft² at a basic wind speed of 100 MPH, 3-second gust per ANSI/TIA-222-H.

DEAD LOAD: The maximum antenna dead load is 500 lbs.

WEIGHT: The tower with the base weighs 1975 pounds.

SECTIONS: The tower is made from 4 each 20 foot sections #6, #7, #8 and #9.

DESCRIPTION:

Tower is complete with a gearbox, drum, hoisting cables, and a rigid concrete base mount. Hoisting cable system designed to extend the telescoping sections uniformly. Stamped prints and calculations for building permits will need to be purchased separately. Price of tower includes base, winch, and manual.

The DX-70 is a motorized with a 1 HP electric motor, electric control box and two limit switches wired for 220 V. This tower has a positive pull down. "Positive Control" worm gear winch permits the raising and lowering of DX towers without the aid of stops or locks. DX-70 uses a 50:1 ratio winch.

This tower has a pulley frame on 3 faces and uses 5/16" x 7 x 19 aircraft cable.

ACCESSORIES:

RCB-86 LT (#9 Wide Section)

TB-2 Thrust Bearing

CO-4 for DX-86

Masts, 10' 20'

TA-86

Replacement Pulleys

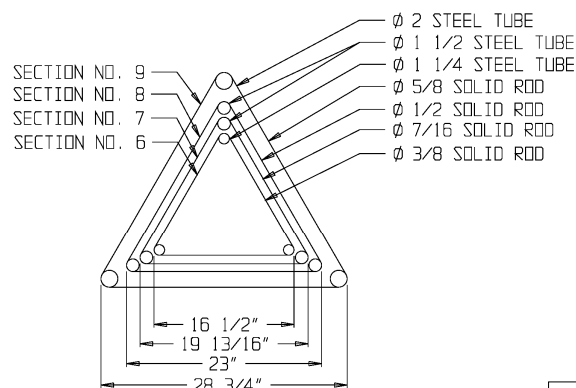
#6 Rotator Plates

DX-70 manual, Drawings

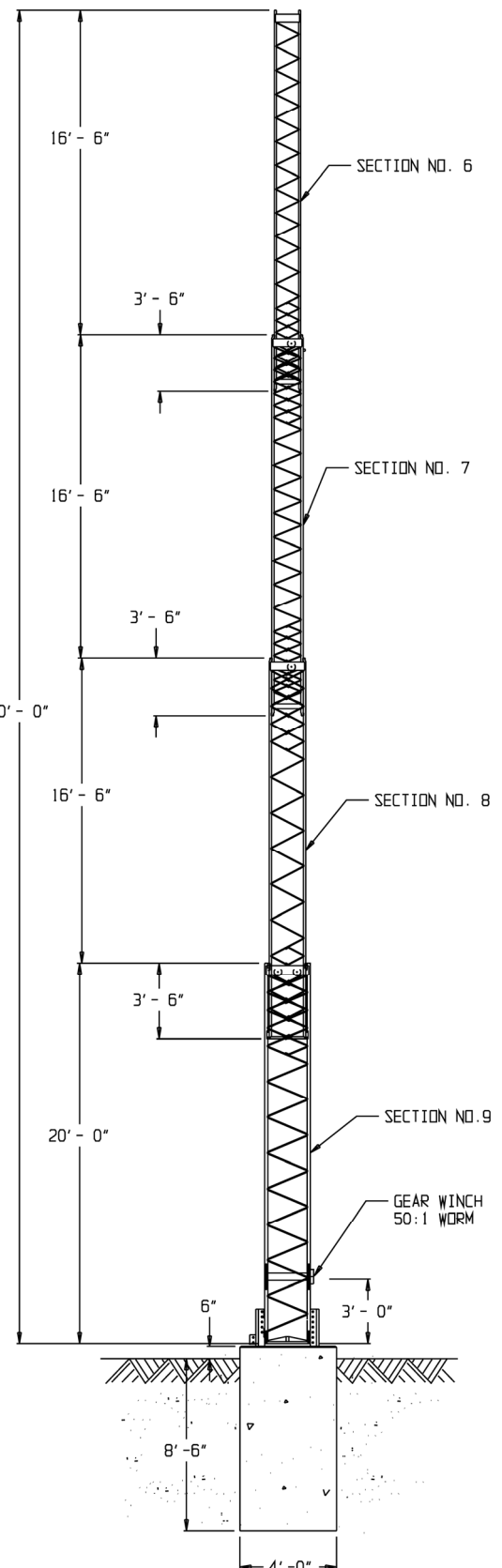
& Calculations

Cable Kit for DX-70

RLT (Remote)



TOWER CROSS SECTION



PART NUMBER: 480-4000 \$22,883.00 USD