

Model No. DX-70HD

TYPE: Self-supporting, extendable, motorized heavy duty crank-up tower.

SPECIFICATIONS:

TOWER HEIGHT: Extended 70'. Retracted 25'.

TOWER SUPPORT: Self-supporting no guys.

WIND LOADING: Engineering analysis indicates the tower will support an antenna with an equivalent effective projected area of 80-ft² at a basic wind speed of 100 MPH, 3-second gust per ANSI/TIA-222-H. Exposure C, No Crest, Topo
This tower is suggested for high wind areas where heavy loading is required.

DEAD LOAD: The maximum antenna dead load is 500 lbs.

WEIGHT: The tower with the base weighs 2,700 pounds.

SECTIONS: The tower is made from 4 each 20 foot sections #7, #8, #9 and #10.

DESCRIPTION:

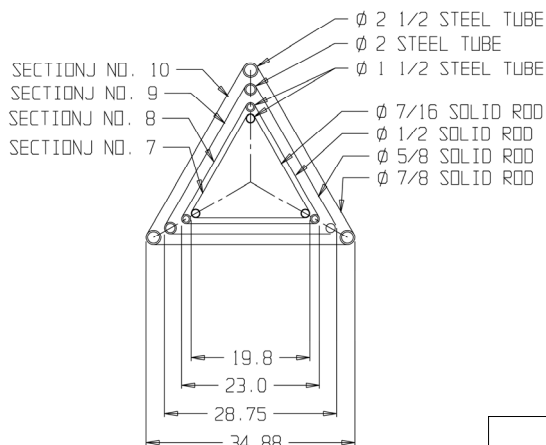
Tower is complete with a 100:1 gearbox, 1.5 hp electric motor, drum, dual 5/16 x 6 x 36 aircraft lift cables, positive pull down and a rigid concrete base mount, RCB #10. The tower is designed to extend the telescoping sections uniformly. Stamped prints and calculations for building permits will need to be purchased separately. Price of tower includes base, winch, and manual

The DX-70HD has pulley frames on all three sides.

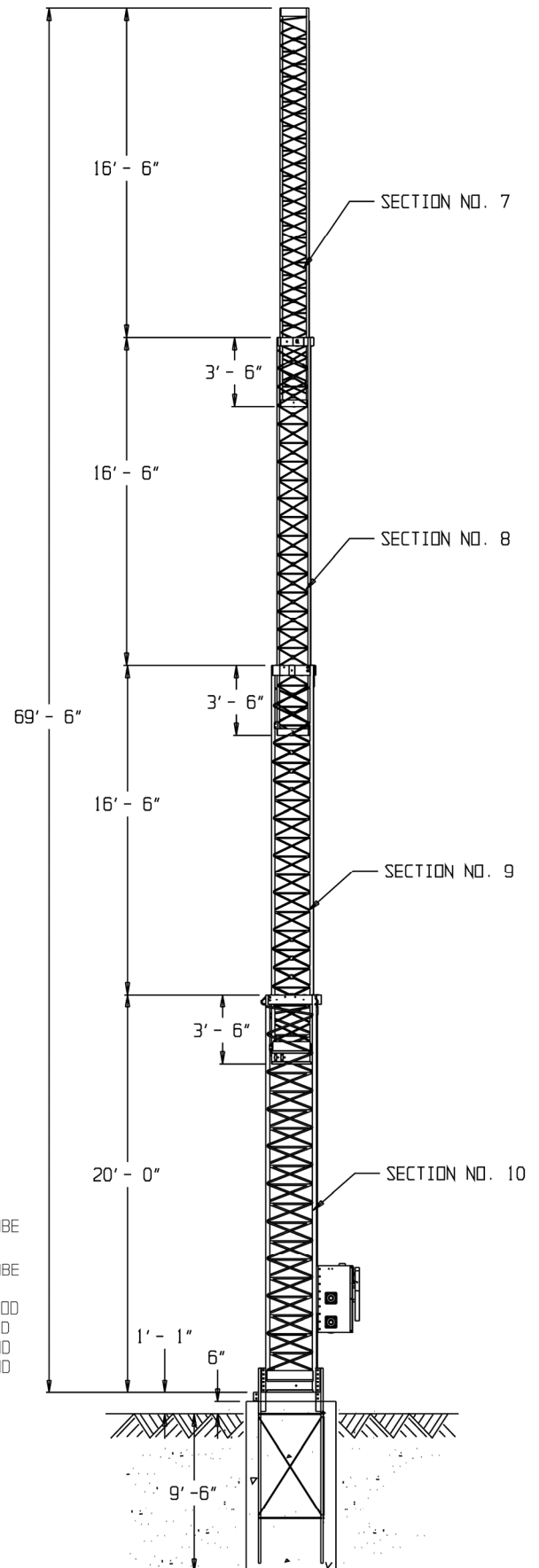
High strength tubing and solid rod bracing allow for an efficient tower design, yet saves weight, resists torsional load and reduces wind resistance, allowing more useful loads to be installed on the tower.

ACCESSORIES:

DX-70HD manual,
Drawings & Calculations
RCB #10
TB-2 Thrust Bearing
CO-4 for DX-70HD
Masts, 20' 10'
TA #10
Replacement Pulleys
#7 Rotator Plates
Cable Kit for DX-70HD
RLT (Remote)



TOWER CROSS SECTION



PART# 483-4000 \$33,575.00 USD