

# Model No. DX-86HD

**TYPE:** Self-supporting, extendable, motorized heavy duty crank-up tower.

## SPECIFICATIONS:

**TOWER HEIGHT:** Extended 86'. Retracted 26'.

**TOWER SUPPORT:** Self-supporting no guys.

**WIND LOADING:** Engineering analysis indicates the tower will support an antenna with an equivalent effective projected area of 24-ft<sup>2</sup> at a basic wind speed of 100 MPH, 3-second gust per ANSI/TIA-222-H., Exposure C, No Crest, Topo  
This stronger tower is suggested for high wind areas where heavy loading is required.

**DEAD LOAD:** The maximum antenna dead load is 500 lbs.

**WEIGHT:** The tower with the base weighs 3,000 pounds.

**SECTIONS:** The tower is made from 5 each 20 foot sections #6, #7, #8, #9 and #10.

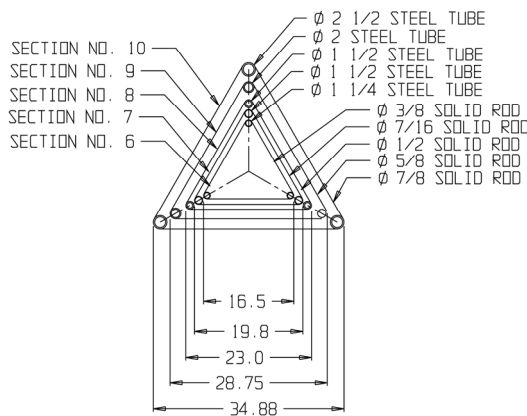
## DESCRIPTION:

Tower is complete with a 100:1 gearbox, 1.5 hp electric motor, drum, dual 5/16 x 6 x 36 aircraft lift cables, positive pull down and a rigid concrete base mount, RCB #10. The tower is designed to extend the telescoping sections uniformly. The DX-86HD has pulley frames on all three sides. Stamped prints and calculations for building permits will need to be purchased separately. Price of tower includes base, winch, and manual

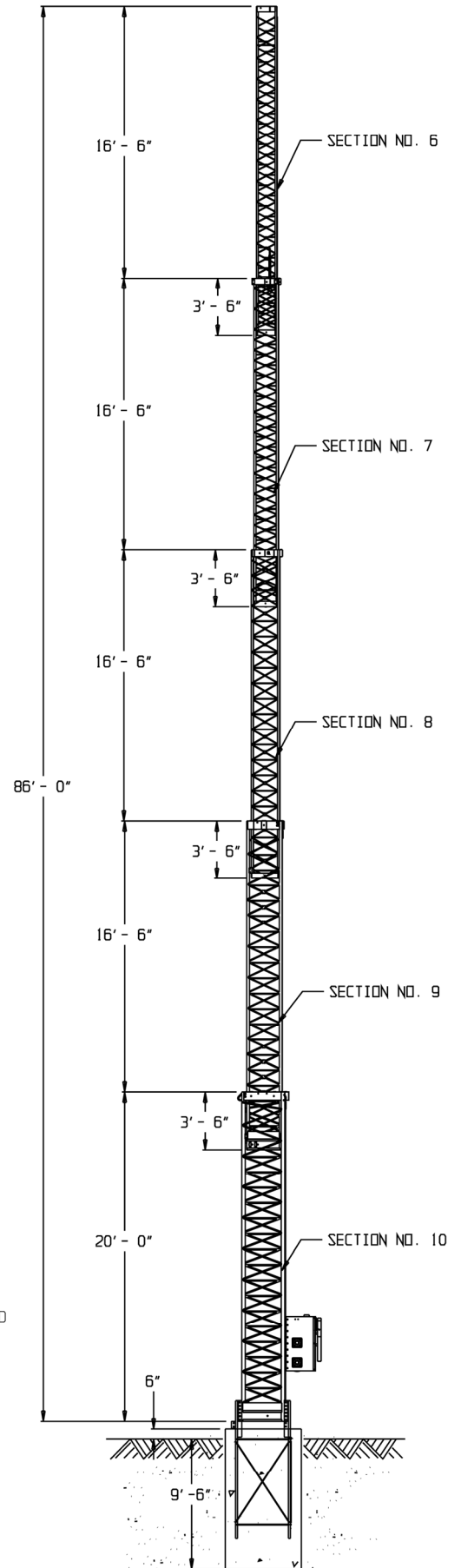
High strength tubing and solid rod bracing allow for an efficient tower design, yet saves weight, resists torsional load and reduces wind resistance, allowing more antenna loads to be installed on the tower.

## ACCESSORIES:

DX-86HD manual, Drawings, Calculations  
RCB #10  
TB-2 Thrust Bearing  
CO-5 for DX-86HD  
Masts, 20' 10'  
TA #10  
Replacement Pulleys  
#6 Rotator Plates  
Cable Kit for DX-86HD  
RLT (Remote)



TOWER CROSS SECTION



PART# 484-4000

\$36,043.00 USD