

# Model No. LM-354HD and HDSP

**TYPE:** Self-supporting, extendable, crank-up tower.

**SPECIFICATIONS:**

TOWER HEIGHT: Extended 54'. Retracted 21'-6"

TOWER SUPPORT: Self-supporting, no guys.

WIND LOADING: Engineering analysis indicates the tower will support an antenna with an equivalent effective projected area of 45-ft<sup>2</sup> at a basic wind speed of 100 MPH, 3-second gust per ANSI/TIA-222-H.

DEAD LOAD: The maximum antenna dead load is 450 lbs.

WEIGHT: The tower with the base weighs 960 pounds.

SECTIONS: The tower is made from three each 20 foot sections #6, #7 and #8.

**DESCRIPTION:**

Tower is complete with a gearbox, drum and hoisting cables, and a rigid concrete base mount. Stamped prints and calculations for building permits will need to be purchased separately. Price of tower includes base, winch, and manual. Hoisting cable system designed to extend the telescoping sections uniformly.

The LM-354HD uses a manual crank on the gearbox to extend and retract the tower. This tower does have a positive pull down.

The LM-354HD SP is a motorized version of the above tower, the 3/4 HP electric motor comes with an electric control box and two limit switches. This tower has a positive pull down and has the largest top section offered.

"Positive Control" worm gear winch permits the raising and lowering of LM towers without the aid of stops or locks. LM-354HD & 354HDSP uses a 50:1 ratio winch.

This tower has a pulley frame on two faces. The lifting cable for the LM-354HD is 1/4 7 x 19 aircraft cable and 1/4" 6 x 36 for the 354HDSP.

**ACCESSORIES:**

RCB-70LT (#8 Wide Section)

Cable Kit for LM-354HD

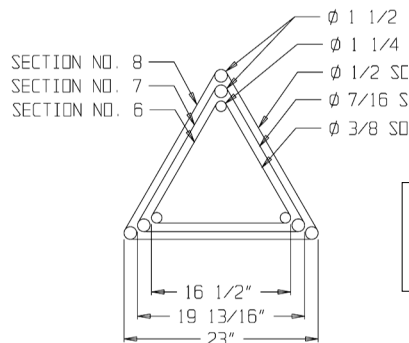
CO-3 for LM-354HD

TA-70

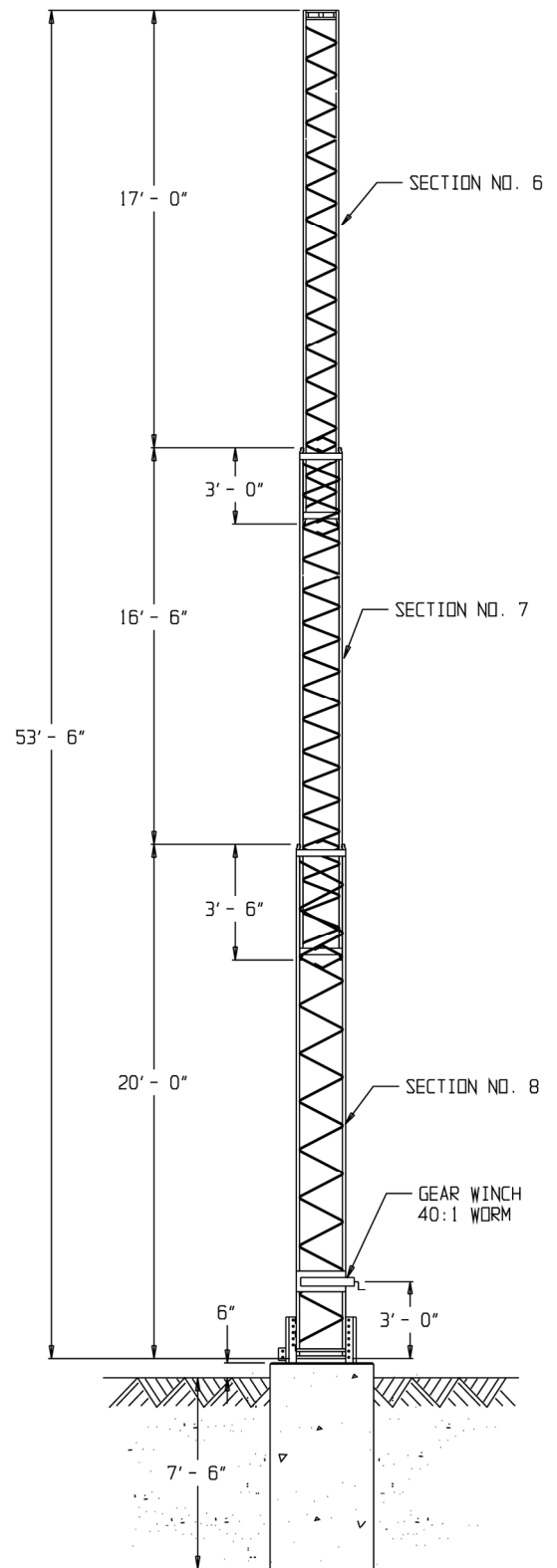
TB-2 Thrust Bearing

Manual Winch

#6 Rotator Plates



TOWER CROSS SECTION



PART# 455-4000 MANUAL	\$10,545.00 USD
PART# 456-4000 MOTORIZED	\$13,537.00 USD