

# Model No. LM-470

**TYPE:** Self-supporting, extendable, crank-up tower.

## SPECIFICATIONS:

**TOWER HEIGHT:** Extended 69'-6". Retracted 25'-6".

**TOWER SUPPORT:** Self-supporting, no guys.

**WIND LOADING:** Engineering analysis indicates the tower will support an antenna with an equivalent effective projected area of 24-ft<sup>2</sup> at a basic wind speed of 100 MPH, 3-second gust per ANSI/TIA-222-H.

**DEAD LOAD:** The maximum antenna dead load is 450 lbs.

**WEIGHT:** The tower with the base weighs 1,200 pounds.

**SECTIONS:** The tower is made from 4 each 20 foot sections #5, #6, #7 and #8.

## DESCRIPTION:

Tower is complete with a gearbox, drum hoisting cables, and a rigid concrete base mount. Hoisting cable system designed to extend the telescoping sections uniformly. Stamped prints and calculations for building permits will need to be purchased separately. Price of tower includes base, winch, and manual

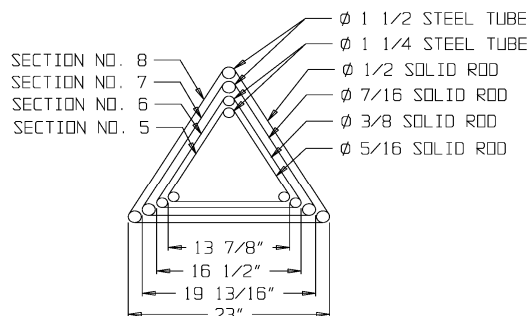
The LM-470 is motorized, and includes 3/4 HP electric motor, electric control box and two limit switches wired for 110. This tower has a positive pull down.

"Positive Control" worm gear winch permits the raising and lowering of the tower sections without the aid of stops or locks. LM-470 uses a 50:1 ratio winch.

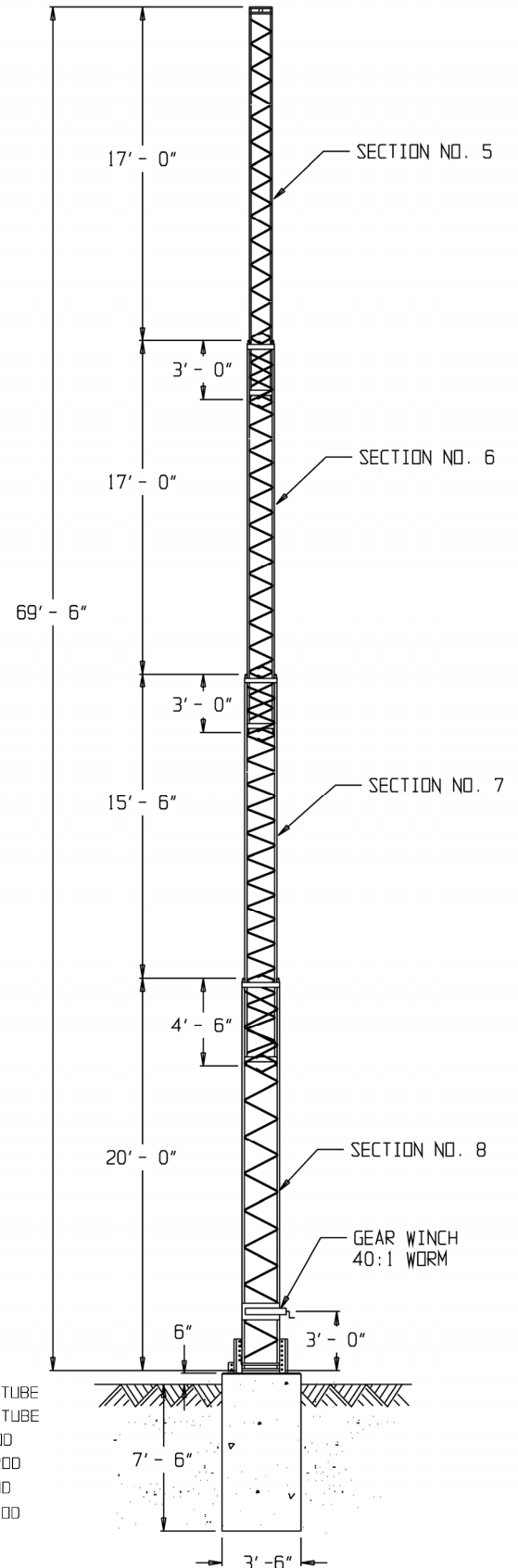
This tower has a pulley frame on two faces and uses 1/4" 7 x 19 aircraft cable.

## ACCESSORIES

RCB-70LT (#8 Wide Section)  
LM-470 Manual, Drawings, Calculations  
CO-4 for LM-470  
Replacement Pulleys  
TA-70  
20' 10' Masts  
#5 Rotor Plates  
TB-2 Thrust Bearing  
Cable Kit for LM-470  
RLT



TOWER CROSS SECTION



**PART# 470-4000 \$15,255.00 USD**