

Model No. MW33

TYPE: Self-supporting, extendable, manual crank-up tower.

SPECIFICATIONS:

TOWER HEIGHT: Extended 32' - 6". Retracted 11' - 6".

TOWER SUPPORT: Self-supporting, no guys.

WIND LOADING: Engineering analysis indicates the tower will support an antenna with an equivalent effective projected area of 45-ft² at a basic wind speed of 100 MPH, 3-second gust per ANSI/TIA-222-H.

DEAD LOAD: The maximum antenna dead load is 250 lbs.

WEIGHT: The tower with the base weighs 250 pounds.

SECTIONS: The tower is made from four each 10 foot sections, #4, #5, #6 and #7 is the base.

DESCRIPTION:

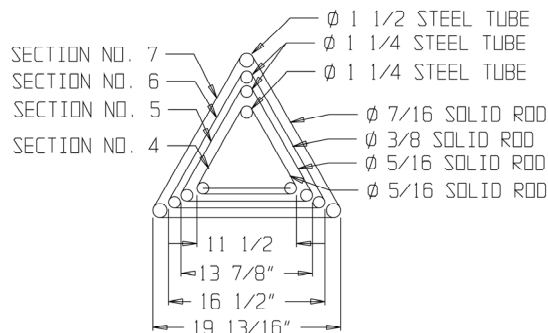
Tower includes a manual crank-up winch and hoisting cables, and a rigid concrete base mount. The tower is designed to extend the tower telescoping sections uniformly. Tower engineering is no longer included in the price of tower. Stamped prints and calculations for building permits will need to be purchased separately.

This tower has a pulley frame on one face only. The lifting cable is 1/4 x 7 x 19 aircraft cable.

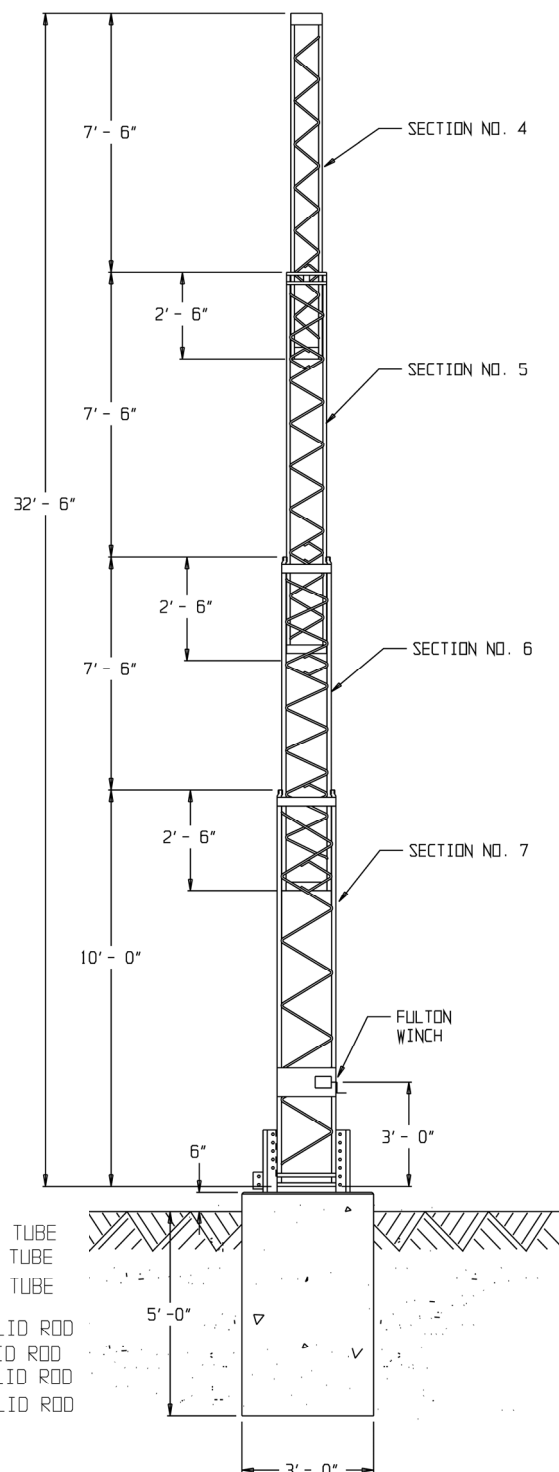
High strength tubing and solid rod bracing allow for an efficient tower design, yet save weight, resist torsional load and reduce wind resistance, allowing more useful load to be installed on the tower.

ACCESSORIES:

RCB-54 LT (#7 Wide Section)
CO-4 for MW-33
TA-54 Special
#4 rotator plates
Cable Kit for MW-33
Masts
MW-33 Manual,
Drawings & Calculations
Replacement Pulleys
TB-2 Thrust Bearing
Manual Winch



TOWER CROSS SECTION



PART# 433-4000

\$6,491.00 USD