

Model No. TM-370HD

TYPE: Self-supporting, extendable, motorized tubular mast.
Designed for light weight antenna load.

SPECIFICATIONS:

TUBULAR MAST HEIGHT: Extended 68'-6". Retracted 27'-6".

WIND LOADING: Engineering analysis indicates the tower will support an antenna with an equivalent effective projected area of 28-ft² at a basic wind speed of 100 MPH, 3-second gust per ANSI/TIA-222-H. Exposure C, No Crest, Topo 1.

DEAD LOAD: The maximum antenna dead load is 600 lbs.

WEIGHT: The mast with the base weighs 3,050 pounds.

SECTIONS: The mast is made from 10", 8", and 6" pipe, Fy= 50 ksi

DESCRIPTION:

Tubular mast is complete with a 50:1 gearbox, 1 hp, 220V electric motor, 1/4" x 6 x 36 aircraft lift cable lift system and a hinged concrete base mount. The mast is designed to extend the tubular telescoping sections uniformly. Stamped prints and calculations for building permits will need to be purchased separately. Price of tower includes base, winch, and manual

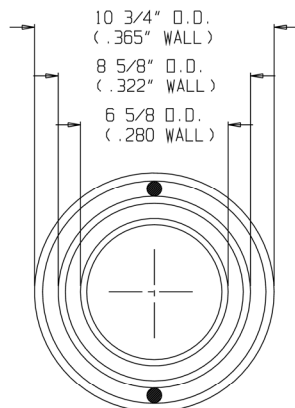
Tubular mast include a hinged base mount that is installed in concrete. This base mount allows the tower to be hinged at ground level and tilted into a vertical position.

The TM towers are hot-dipped galvanized after fabrication for maintenance free finish.

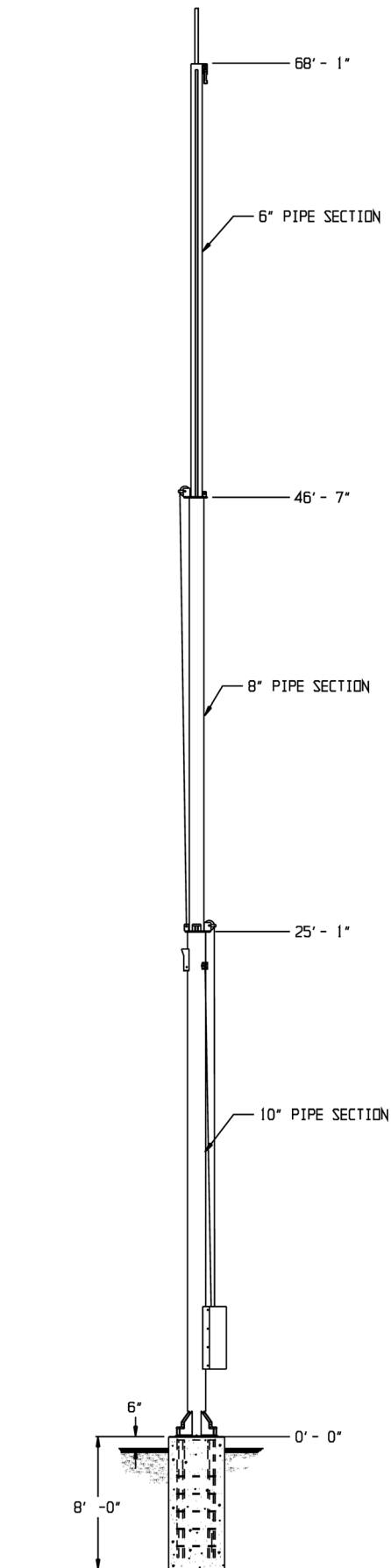
The top section of the mast is adapted to accept an accessory rotator cage assembly. If a rotator assembly is not used, the mast adapter can be ordered as an accessory item. All standard mast adapters accommodate a two (2) inch O.D. mast size.

ACCESSORIES:

- TM-370HD manual, Drawings, Calculations
- TM-370HD Concrete Base
- CO-3 for TM
- Work Platform
- Tilting Gin Pole
- Rotator Cage Assembly
- Cable Kit
- TB-2 Thrust Bearing
- Remote Control Kit



CROSS SECTION



PART# 526-4000

\$18,471.00 USD